

# AX300 High Gain Wi-Fi 6 Wireless USB Adapter

Model: MA14H

## // Highlights

---

- Fast 287 Mbps Wi-Fi
- Pre-Loaded Internal Driver
- High Performance Antenna
- MU-MIMO Supported<sup>^</sup>

Wi-Fi 6

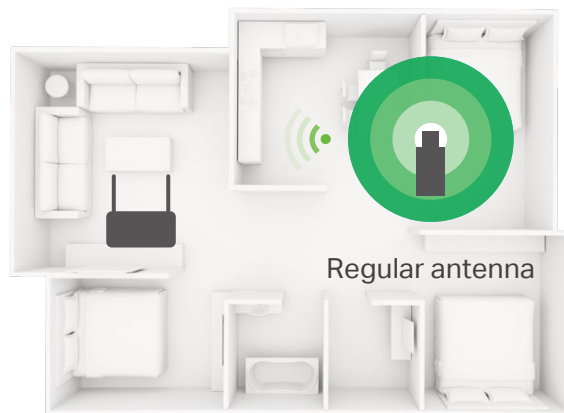
Windows 11  
Compatible with Windows 11/10/7

Linux  
Support



## // Boost Wireless Range with High Gain Antenna

A high gain antenna reaches your router from farther with more precise directional range, sustaining faster and more stable wireless connections.



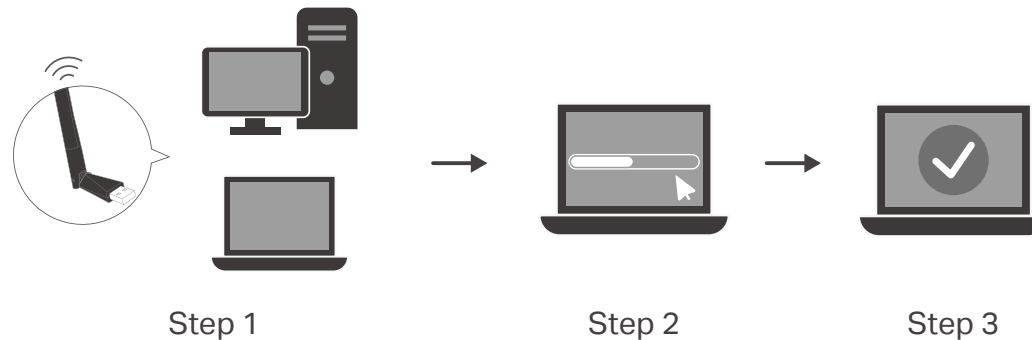
Regular Adapter



MA14H

## // Pre-Loaded Internal Driver

Plug in MA14H with its internal driver and enjoy simple installation on Windows 11/10/7 or easily download the driver from the MERCUSYS official website for Linux.



## // Specifications

### Wireless Specifications

| Wi-Fi Speed     | Wi-Fi Standards    | Frequency | Wireless Security             | Reception Sensitivity  |
|-----------------|--------------------|-----------|-------------------------------|--|
| Up to 287 Mbps† | IEEE802.11b/g/n/ax | 2.4GHz    | WPA-PSK/WPA2-PSK,<br>WPA/WPA2 | 11g 6M: -95dBm<br>11ax HE40 MCS9: -68dBm<br>11ax HE40 MCS0: -92dBm |

### Physical Specifications

| Interface | Dimensions (W x D x H)                            | Antenna                               |
|-----------|---|---------------------------------------|
| USB 2.0   | 57.8 × 16.8 × 173.4 mm<br>(2.28 × 0.66 × 6.83 in) | 1 × External High-Performance Antenna |

### Others

#### System Requirements

Supported operating systems:  
Windows 11/10/7 and Linux (Kernel 3.10 and later)

#### Environment

Operating Temperature: 0°C~40°C (32°F ~104°F)  
Operating Humidity: 10%~90% non-condensing  
Storage Humidity: 5%~90% non-condensing

#### Package Contents

AX300 High Gain Wi-Fi 6 Wireless USB Adapter (MA14H)  
Quick Installation Guide

For more information, please visit [www.mercusys.com](http://www.mercusys.com).

Specifications are subject to change without notice. MERCUSYS is a registered trademark of MERCUSYS TECHNOLOGIES CO., LTD. Other brands and product names are trademarks or registered trademarks of their respective holders. Copyright © 2025 MERCUSYS TECHNOLOGIES CO., LTD. All rights reserved.

†Maximum wireless signal rates are the physical rates derived from IEEE Standard 802.11 specifications. Actual wireless data throughput and wireless coverage, and quantity of connected devices are not guaranteed and will vary as a result of network conditions, AP limitations, and environmental factors, including building materials, obstacles, volume and density of traffic, and AP location.

△Use of Wi-Fi 6 (802.11ax), and features including MU-MIMO require APs to also support the corresponding features.