

Quick  
Installation Guide

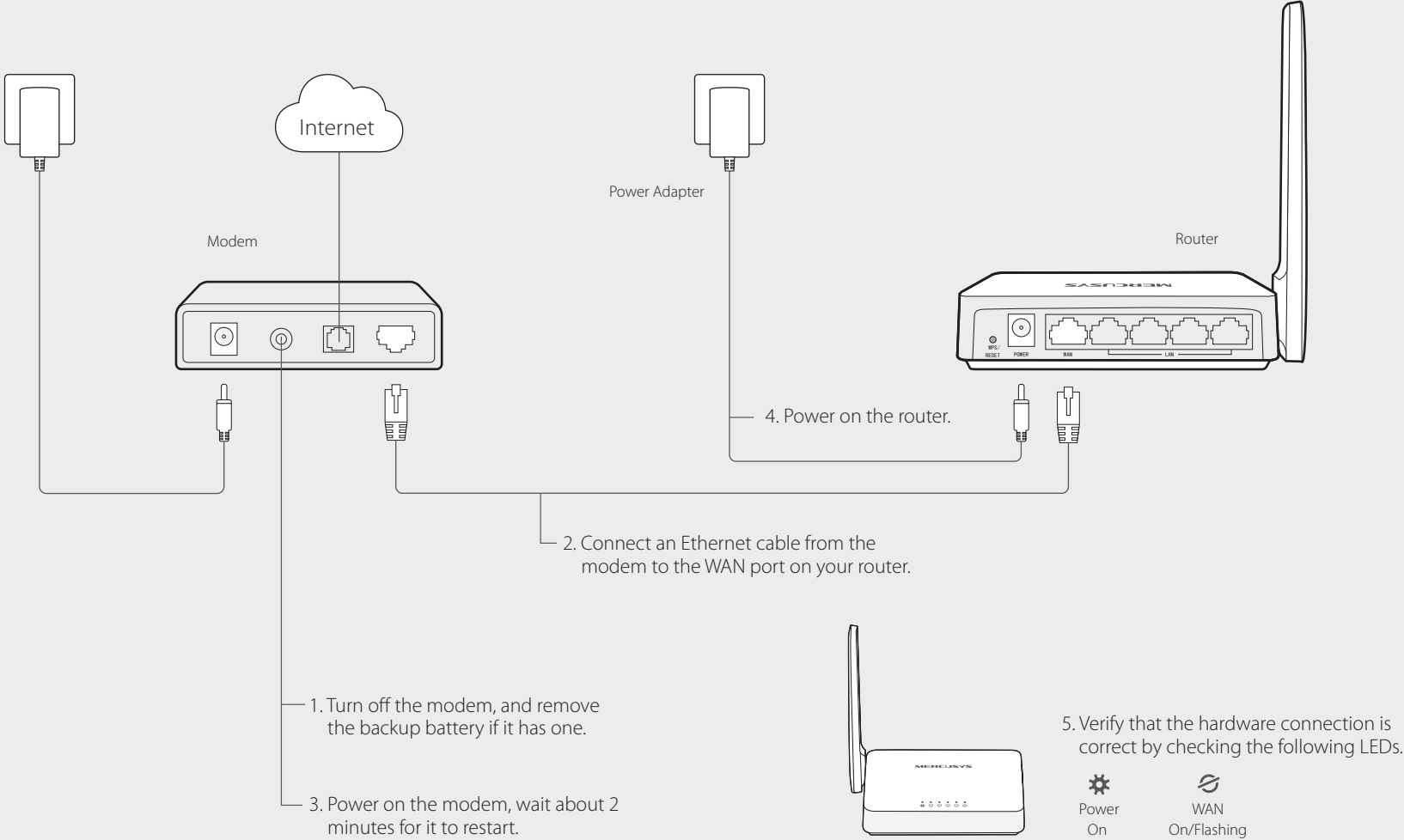
MW155R  
150Mbps Wireless N Router

For more information, please visit our website:  
<http://www.mercusys.com>  
7107500055 REV1.0.0



1 | Connect the  
Hardware

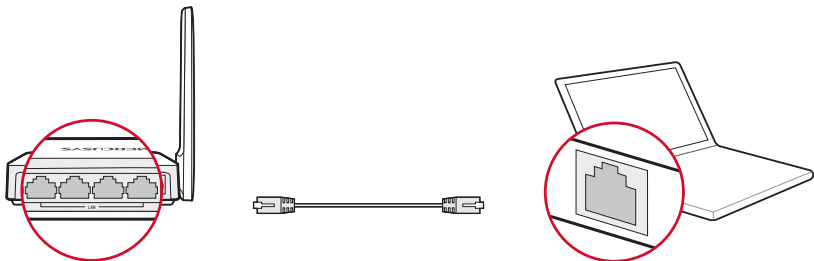
Note: If your Internet connection is through an Ethernet cable from the wall instead of through a DSL/Cable/Satellite modem, connect the Ethernet cable directly to the router's WAN port.



2 | Configure the  
Router

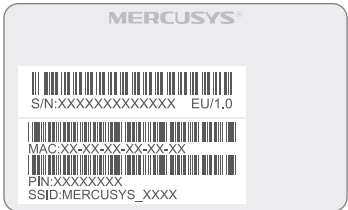
1 Connect your computer to the router (Wired or Wireless).

Wired



Wireless

Connect wirelessly using the SSID (Network Name) printed on the product label at the bottom of the router.



2 Configure the router using a web browser.

a. Enter **http://mwlogin.net** in the address bar of the web browser. Create a login password when prompted, then click **OK**.

Password

\*\*\*\*\*

Confirm Password

\*\*\*\*\*

OK

Note: If the login window does not appear, please refer to FAQ>Q1.

b. Click **Next** to start **Quick Setup**. Choose your connection type. If you are unsure of your connection type, choose **Auto-Detect**. Then click **Next**.

Quick Setup - WAN Connection Type

☒ Auto-Detect (Recommended)

☐ PPPoE

☐ Dynamic IP

☐ Static IP

BackNext

c. Enter the parameters provided by your ISP and then click **Next**. Here we take **PPPoE** as an example.

Quick Setup - PPPoE

Username:

XXXXXXXX

Password:

\*\*\*\*\*

Confirm Password:

\*\*\*\*\*

BackNext

d. Customize your wireless network name and password, then click **Next**.

Quick Setup - Wireless Settings

SSID:

MERCUSYS\_XXXX

Wireless Security:

☒ WPA-PSK/WPA2-PSK

Wireless Password:

\*\*\*\*\*

☐ Disable Security

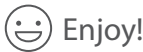
BackNext

e. Click **Finish** to complete the setup.

Quick Setup

Click Finish to finish the Quick Setup

BackFinish



Enjoy!

Now your wired and wireless devices can connect to the Internet!

LED Indicators

LED	Name	Status	Indication
	POWER	Off	Power is off.
		On	Power is on.
		Flashing Slowly	Connection via WPS is in process.
		Flashing Quickly	Connection via WPS is failed.
	LAN	Off	The corresponding port is not connected.
		On	The corresponding port is connected.
	WAN	Flashing	The corresponding port is transmitting/receiving data.

FAQ (Frequently Asked Questions)

Q1. What can I do if the login window does not appear?

- A1. If the computer is set to a static IP address, change it to obtain an IP address automatically.
- A2. Verify that http://mwlogin.net is correctly entered in the web browser.
- A3. Use another web browser and try again.
- A4. Reboot your router and try again.
- A5. Disable the network adapter used currently and then enable it again.

Q2. What can I do if I cannot access the Internet?

- A1. Check if the Internet is working properly by connecting a computer directly to the modem via Ethernet cable.  
If not, contact your Internet Service Provider.
- A2. Open a web browser, enter http://mwlogin.net and try to set up again.
- A3. Reboot your router and try again.

Note: For cable modem users, reboot the modem first. If the problem still exists, log in to the web management page, go to Network>MAC Clone, click Clone MAC Address and Save.

Q3. How do I restore the router to its factory default settings?

- A1. With the router powered on, press and hold the WPS/RESET button on the rear panel for at least 5 seconds until all the LEDs turn on temporarily.
- A2. Log in to the web management page of the router, and go to System Tools>Factory Defaults, click Restore, then wait until the process completes.

Q4. What can I do if I forget my web management page password?

- A. Restore the router to its factory default settings and then create a new password when prompted.

Q5. What can I do if I forget my wireless network password?

- A1. By default, the wireless network has no password.
- A2. If you have set password for the network, log in to the router's web management page, go to Wireless>Wireless Security to obtain or reset your password.