

## Quick Installation Guide



### Wireless USB Adapter

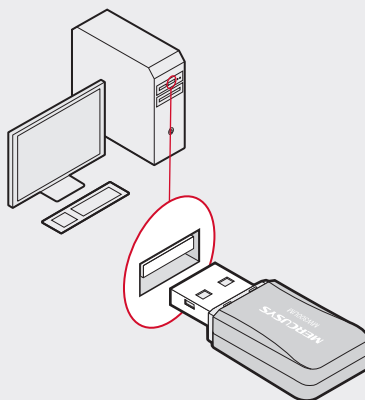
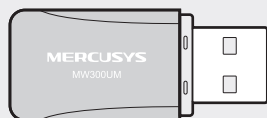
\*MW300UM is used for demonstration  
in this QIG.

For more information, please visit our website:  
<http://www.mercusys.com>

7107500048 REV1.0.0

# 1 | Connect to a Computer

Insert the adapter into a USB port on your  
computer directly.

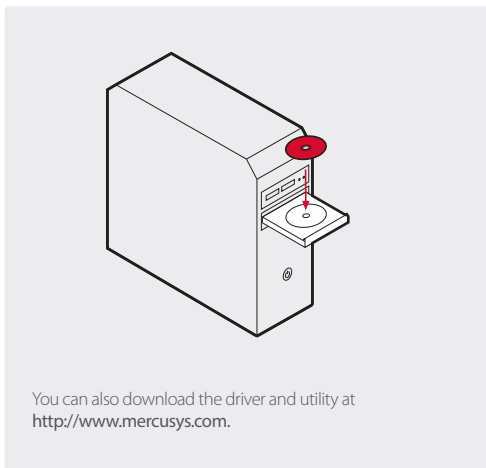


#### Note:

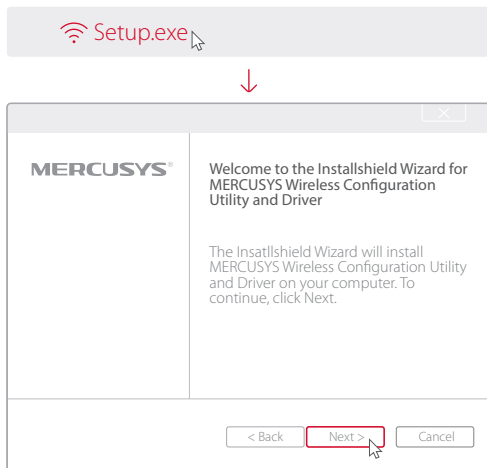
In Windows XP, a Found New Hardware Wizard  
window will appear when the adapter is detected.  
Please click **Cancel**.

## 2 | Install Driver and Utility

A: Insert the CD and run the CD manually.



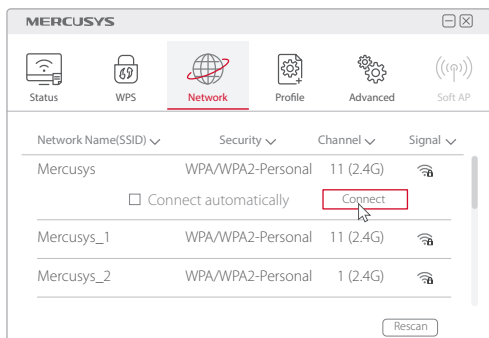
B: Double click **Setup.exe**, then follow the InstallShield Wizard to complete the installation.




## 3 | Join a Wireless Network

Option 1: Via Mercusys Utility

Select your preferred Wi-Fi network from the pop-up utility window and click **Connect**. The symbol  indicates successful connection.



Option 2: Via Windows Wireless Utility

Click  (Network icon) on the taskbar, select your preferred Wi-Fi network, and click **Connect**.

Note:

In Windows XP, you need to disable Mercusys Utility (if installed) before using Windows Wireless Utility. Go to **Advanced > Select wireless configuration tool**, and select **Use Windows wireless configuration tool**.

