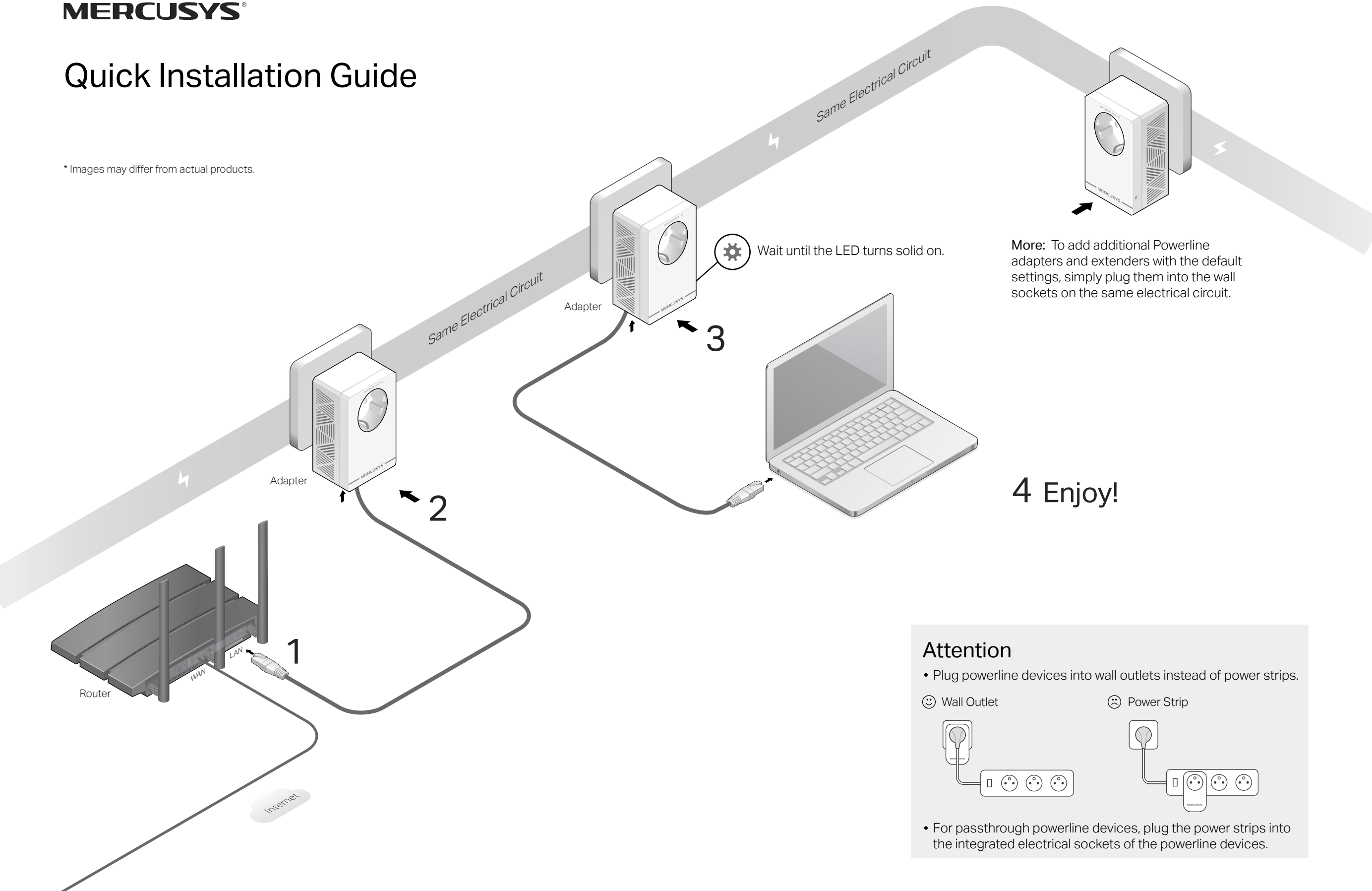


Quick Installation Guide

* Images may differ from actual products.

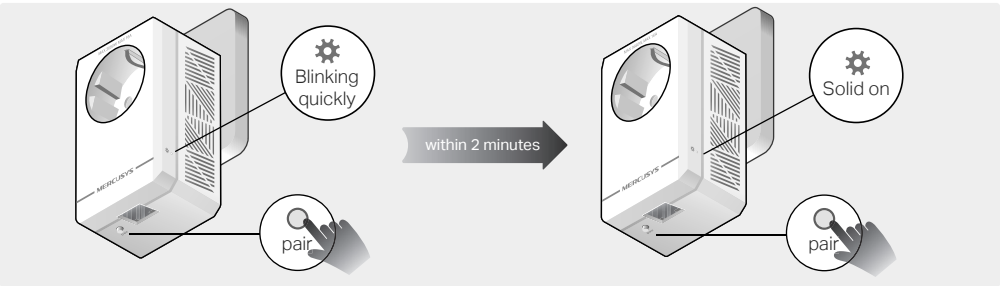


Set Up a Secure Powerline Network by Pairing (Recommended)

You can create or join a secure powerline network using the **Pair** button on two devices at a time.
Tip: We recommend that you plug in the powerline devices near each other when pairing.

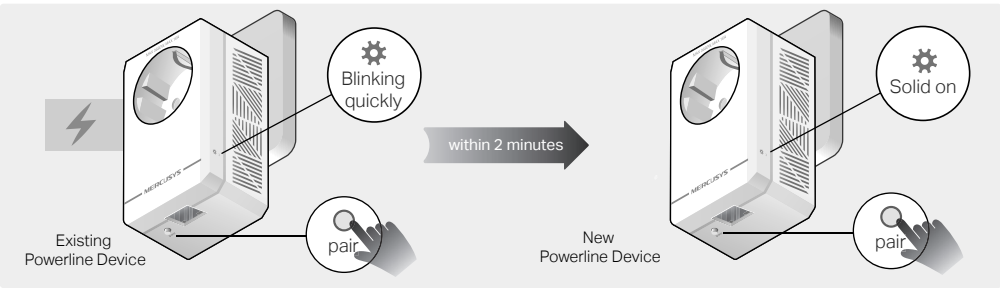
To create a secure powerline network:

1. Press the **Pair** button on one of the powerline devices for 1 second. The LED should start blinking quickly.
Note: If the LED does not blink, press the **Pair** button again.
2. Within 2 minutes, press the **Pair** button on another device for 1 second. Its LED should start blinking quickly.
3. Once the LED turns solid on, a powerline network has been successfully created.

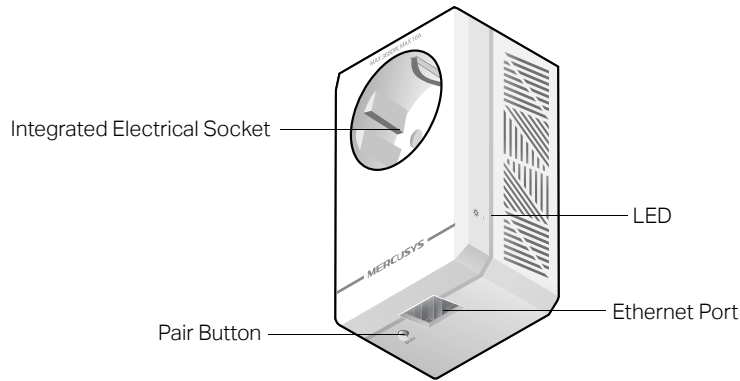


To join an existing secure powerline network:

1. Press the **Pair** button on any of the existing powerline devices for 1 second. Its LED should start blinking quickly.
Note: If the LED does not blink, press the **Pair** button again.
2. Within 2 minutes, press the **Pair** button on the new powerline adapter for 1 second. Its LED should start blinking quickly.
3. Once the LED turns solid on, a powerline network has been successfully created.



Product Overview



ITEM	DESCRIPTION
Integrated Electrical Socket	Used as an electrical outlet expansion for power strip or household appliances. It can remove some electrical noise that might affect powerline performance.
Pair Button	Press and hold for 1 second to set up or join a secure powerline network. Press and hold for more than 6 seconds to reset the powerline adapter.
LED	Off: The powerline adapter is off or in the power-saving mode*. Solid on: The powerline adapter is on and successfully connected to a powerline network. Blinking quickly: Pairing is in process. Blinking slowly: The powerline adapter is not connected to any powerline network.
Ethernet Port	Connects to an Ethernet cable.

* Five minutes after the device connected to the powerline adapter is turned off or inactive, the powerline adapter will automatically switch to Power-Saving Mode.

Frequently Asked Questions

Q1. How do I reset my powerline adapter?

With the powerline adapter plugged into an electrical outlet, press and hold the Pair button for more than 6 seconds until the LED goes off momentarily and then comes back on.

Q2. What should I do if there is no internet connection in my powerline network?

- Ensure all powerline devices are on the same electrical circuit.
- Ensure all LEDs are solid on. If not, pair your adapters and extenders again.
- Ensure all hardware connections are correctly and securely connected.
- Check if you have an internet connection by connecting the computer directly to the modem or router.
- Ensure your computer's IP address is in the same segment as your router's.

Q3. What should I do if a successfully-paired powerline device does not reconnect after it is relocated?

- Try another socket and make sure it is on the same electrical circuit.
- Try to pair the device again, and make sure the LED is solid on.
- Check for possible interference due to a washing machine, air conditioner or other household appliances that may be too close to one of the powerline devices. Plug the appliance into the integrated electrical socket to remove some electrical noise if your powerline device has an integrated electrical socket.

Easy Management

Using MERCUSYS PLC utility for advanced configuration:

1. Visit <http://www.mercusys.com>, and search for your product.
2. Find and download the compatible version of utility on its Support page.
3. Install the utility and start your configuration.

Safety Information

- Keep the device away from water, fire, humidity or hot environments.
 - Do not attempt to disassemble, repair, or modify the device. If you need service, please contact us.
 - For passthrough devices, plug the power strips into the integrated electrical sockets of the devices, but devices of the same or another type not be stacked in normal use.
 - Plug the powerline devices directly into the wall outlets but not the power strips.
 - Plug the product into the wall outlets with earthing connection through the plug.
- Please read and follow the above safety information when operating the device. We cannot guarantee that no accidents or damage will occur due to improper use of the device. Please use this product with care and operate at your own risk.

MERCUSYS hereby declares that Powerline Adapter is in compliance with the essential requirements and other relevant provisions of directives 2014/30/EU, 2014/35/EU, 2009/125/EC, 2011/65/EU and (EU)2015/863. The original EU Declaration of Conformity may be found at <https://www.mercusys.com/en/ce/>

Mercusys hereby declares that Powerline Adapter is in compliance with the essential requirements and other relevant provisions of the Electromagnetic Compatibility Regulations 2016 and Electrical Equipment (Safety) Regulations 2016. The original UK Declaration of Conformity may be found at <https://www.mercusys.com/support/ukca/>

Support

For technical support, user guides, and more information, please visit <https://www.mercusys.com/support>.

